



# DATA NETWORKS WAN

OvertheWire offers private connections to construct a fully managed, custom built WAN, utilising multiple upstream carriers.

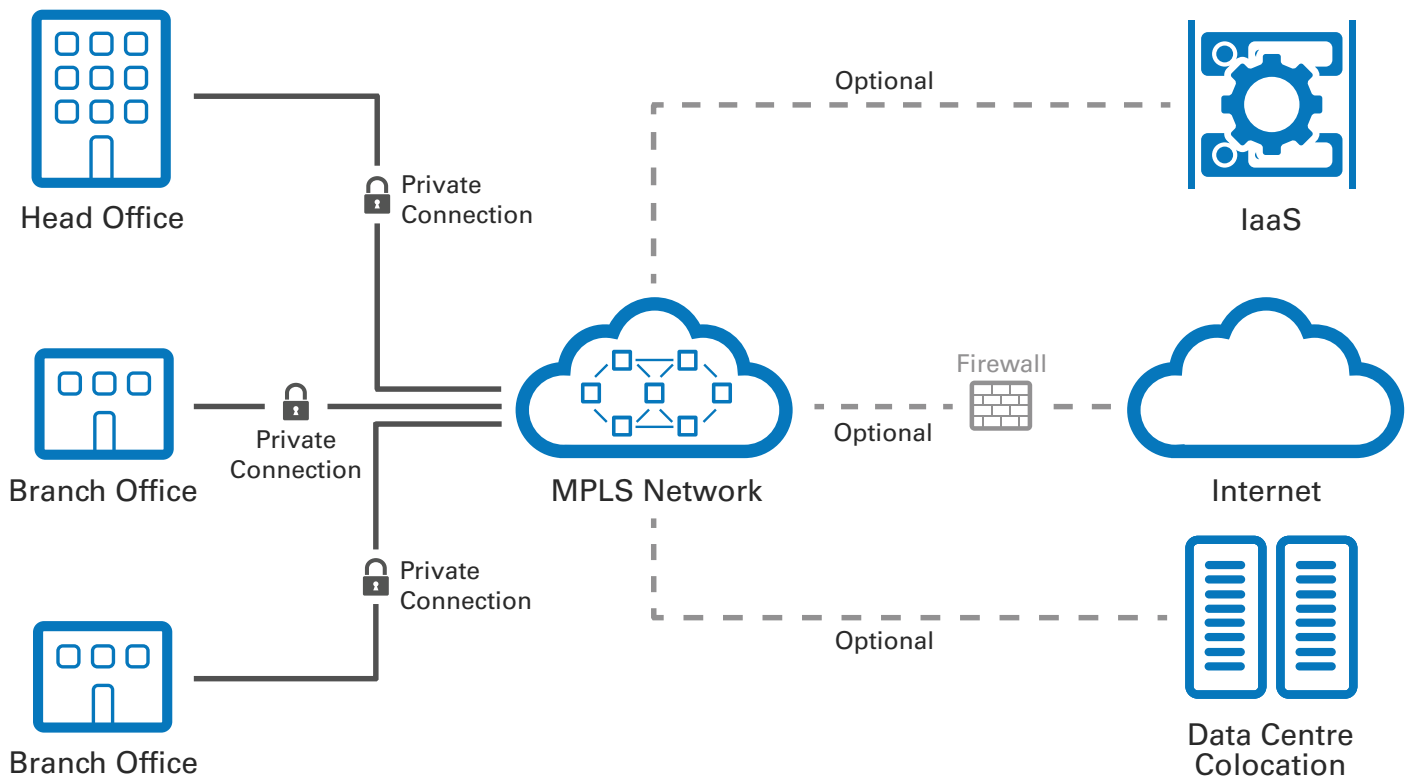
With access speeds ranging from 512Kbps to 10Gbps and an MPLS network spanning from Perth to Auckland, OTW's solutions cover the simplest to the most complex of data networks.

Over the Wire will supply access tails matching the most appropriate technology to location and/or price requirements including:

- ADSL/ADSL2+
- FAB
- NBN
- SHDSL
- Ethernet in the First Mile (EFM)
- Ethernet over Copper (EoC)
- Ethernet over Fibre (EoF)
- 3G
- Microwave

## KEY FEATURES

- Unmetered data transfer between every endpoint
- Quality of service on every link
- Single point of contact for the network end-to-end
- Access to numerous tail technologies for best-fit solutions
- Dramatically improved security and latency when compared to VPN



Colocation



Infrastructure as a Service



Data Networks



Voice



Internet



Video



Hosted Services



Managed Services

## OUR COMPANY

Who are we? A straight talking, no-nonsense company that gets things done quickly and without fuss. We're outcomes-focused. We work to understand exactly what you need, then build a solution that works for you, rather than retro-fitting your needs to our offerings.

If you're tired of empty promises and poor service, and you'd prefer to deal with a more agile and responsive company - who's ready to listen and to give you what you actually need, then it might be time to go Over the Wire.

## ORDERING AND QUOTES

We understand the importance of getting things done as easily as possible. Just give our friendly sales staff a call and we will take care of the rest. Once an order is placed we'll keep you up to date with each stage of the process so you'll know exactly when to expect service delivery.

## Staged Rollouts

To ensure services can be delivered where and when they are needed, Over the Wire typically utilises staged rollouts for WAN deployments. This process mitigates the risk involved with cutover periods and ensures adequate time is available for staff training.

## Migrations

When migrating from existing networks, OTW will develop a customised solution that ensures a smooth and seamless transition from the existing infrastructure onto an Over the Wire package.

## Project Management

Over the Wire has a long history in supporting IT for business, whether it is for one-off projects, major overhauls or ongoing systems maintenance. By using staff dedicated to growing and bettering businesses, we are uniquely equipped to offer project management for network rollouts.

## SERVICE OVERVIEW

### Internet Connectivity

Over the Wire runs its own Internet connectivity for WAN and colocation customers with multiple upstream providers utilised for redundancy. We host our own BGP sessions with our upstream providers, who are chosen for their proven ability to deliver quality services.

### Service Features

- ▀ QoS
- ▀ Access Redundancy
- ▀ National Network
  - International Reach
- ▀ Uncongested Network
- ▀ Monitoring
- ▀ L3 Network
- ▀ L2 Network
  - VLL
  - VPLS

